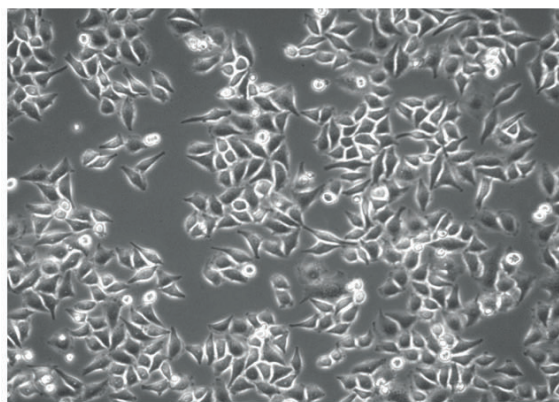


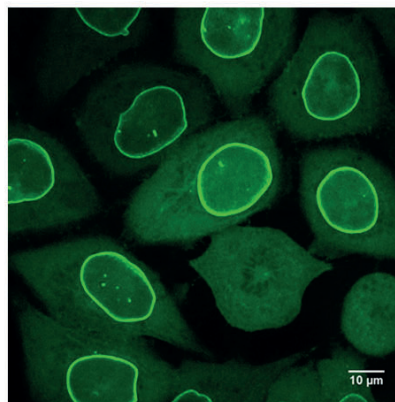
*ALWAYS READY,
ALWAYS PERFORMING!*

Lamin-Chromobody® Assay Ready Cells

- + constitutive expression of GFP-tagged alpaca antibody against lamin
- + in vivo labeling of nuclear membrane
- + real-time monitoring of cell division and apoptosis
- + assay ready cells for instant use, no cultivation or passaging required

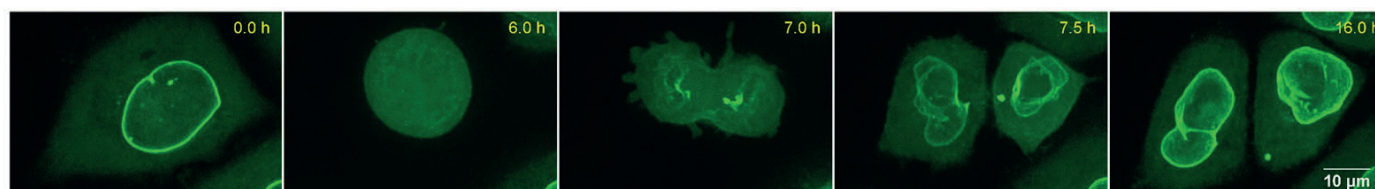


Assay Ready Cells adhere within 24 hours



Chromobody labelled lamin

chromotek
new tools for better research

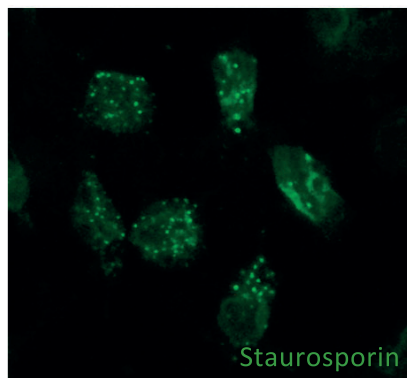
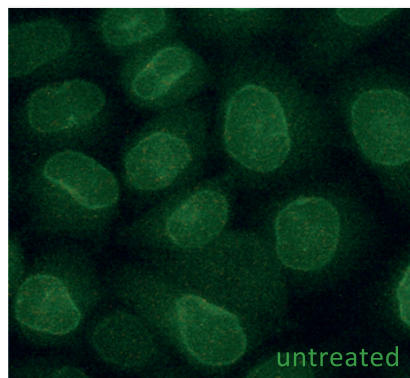


Reorganisation of cell membrane during mitosis (convocal images provided by Chromotek)

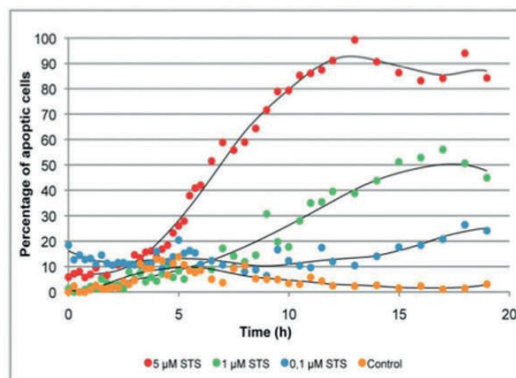
Chromobody® is registered trademark of Chromotek GmbH

Assay Ready Cells of the cell line are provided under a license from Chromotek GmbH





Induction of apoptosis by Staurosporin (16 μ M, 24 h) in assay ready Lamin Chromobody cells.



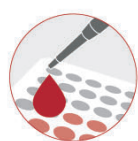
Quantification of apoptotic cells by HCS (data kindly provided by Chromotek)

make your life easier

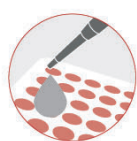
- + safe laboratory resources, no maintenance cell culture required
- + obtain reproducible results from reliably performing cells
- + flexibly schedule your assay, cells are instantly available at any time



thaw



dispense



add samples



incubate



measure

EUROPEAN OFFICE

+49 (160) 987 577 56

acCELLerate GmbH
Osterfeldstraße 12-14
22529 Hamburg · Germany

please@accelerate.me
www.accelerate.me

US OFFICE

+1 (732) 698 3404

acCELLerate GmbH
1 Jill Court, Bldg. 16 Unit 10
Hillsborough, NJ 08844 · USA

