

**1321N1-huP2RX1 assay ready cells**

CatN<sup>o</sup>: **AW280**

Lot#: **92-190815VJ01**

**PRODUCT DEFINITION**

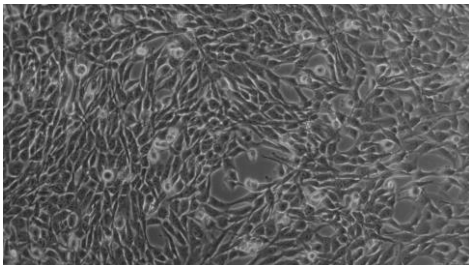
Cryopreserved cells for instant use in cell-based assays. Single cell suspension in DMEM based freezing medium containing 10% FBS and 5% DMSO.

**QUALITY SPECIFICATION**

	Batch Quality Control	Specification Limits
Cell Count <sup>1</sup>	<b>1.24E+07</b>	9.00E6 < > 1.20E7
Viability after thawing <sup>1</sup>	<b>97 %</b>	> 90 %
Proliferative Capacity <sup>2</sup>	<b>172 %</b>	> 85 %
Debris/Cell Ratio <sup>1</sup>	<b>0.26</b>	< 0.8
Aggregation <sup>1</sup>	<b>1.2</b>	<1.8
Sterility (bacteria, yeast, fungi) <sup>3</sup>	<b>sterile by visual inspection</b>	negative after four days
Sterility (mycoplasma) <sup>4</sup>	<b>negative by PCR</b>	negative
Morphology	<b>unsuspicious</b>	compared to reference image

<sup>1</sup>: as determined by CASY TT cytometer, <sup>2</sup>: growth of the cells within 72 hours after thawing in relation to an exponentially growing culture. <sup>3</sup>: by microscopic/visual control after four days of culture in the absence of antibiotics, <sup>4</sup>: as determined in the cell culture supernatant after four days of cultures by PCR.

**MORPHOLOGY**



**STORAGE**

Below -150°C (e.g. in liquid nitrogen)

Keep on dry ice during inner company transportation and before thawing

Best before: 15.08.2020

**LIMITED USE**

The product is sold under the terms of a Limited Use Label License attached to the product. By breaking the seal of the product package, the user explicitly agrees to the license terms. Assay Ready Cells are for immediate assay use only. The user shall not propagate, passage, or refreeze the cells with the purpose to multiply them.

